

# Posaune lernen

mit

Spaß

**systematische Schule  
für Anfänger**

**Band 2**

von  
Martin Pschorr

Neufassung 2006

PR 9707

alle Rechte © 1997 by Phonos Musikverlag

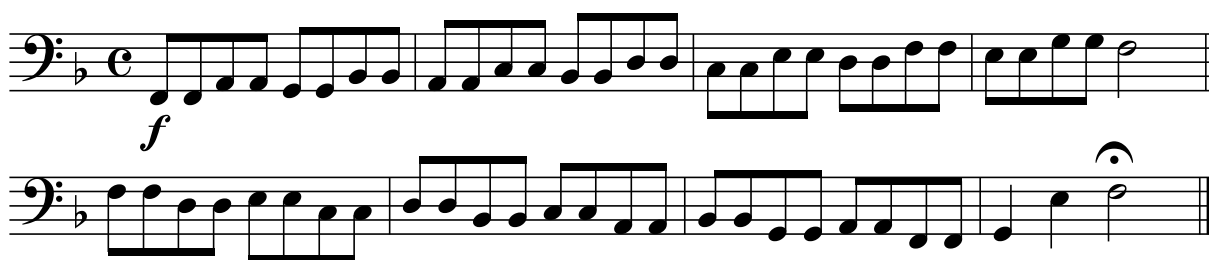
148



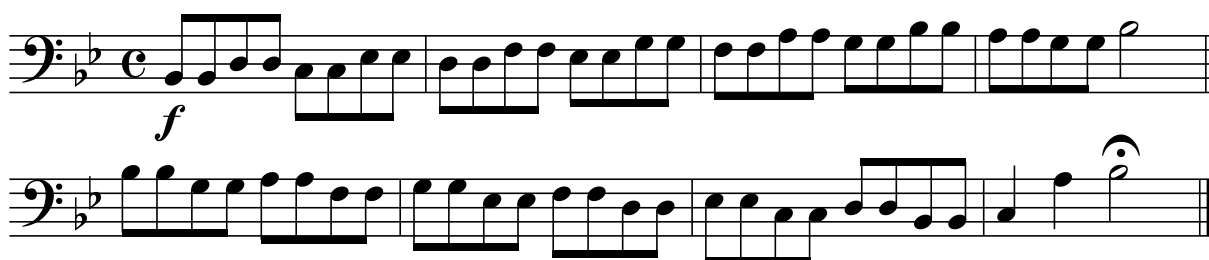
149



150



151



181

Measures 181 and 182 of a musical score. Measure 181 is in common time (C) and features a melody in the upper voice and a bass line in the lower voice, both marked *mf*. Measure 182 is in 3/4 time and features a melody in the upper voice and a bass line in the lower voice, both marked *f*. The key signature is two flats (B-flat and E-flat).

182

Measures 183 and 184 of a musical score. Measure 183 is in 3/4 time and features a melody in the upper voice and a bass line in the lower voice, both marked *mf*. Measure 184 is in 3/4 time and features a melody in the upper voice and a bass line in the lower voice, both marked *f*. The key signature is two flats (B-flat and E-flat).

183

Measures 185 and 186 of a musical score. Measure 185 is in common time (C) and features a melody in the upper voice and a bass line in the lower voice, both marked *f*. Measure 186 is in common time (C) and features a melody in the upper voice and a bass line in the lower voice, both marked *f*. The key signature is two flats (B-flat and E-flat).